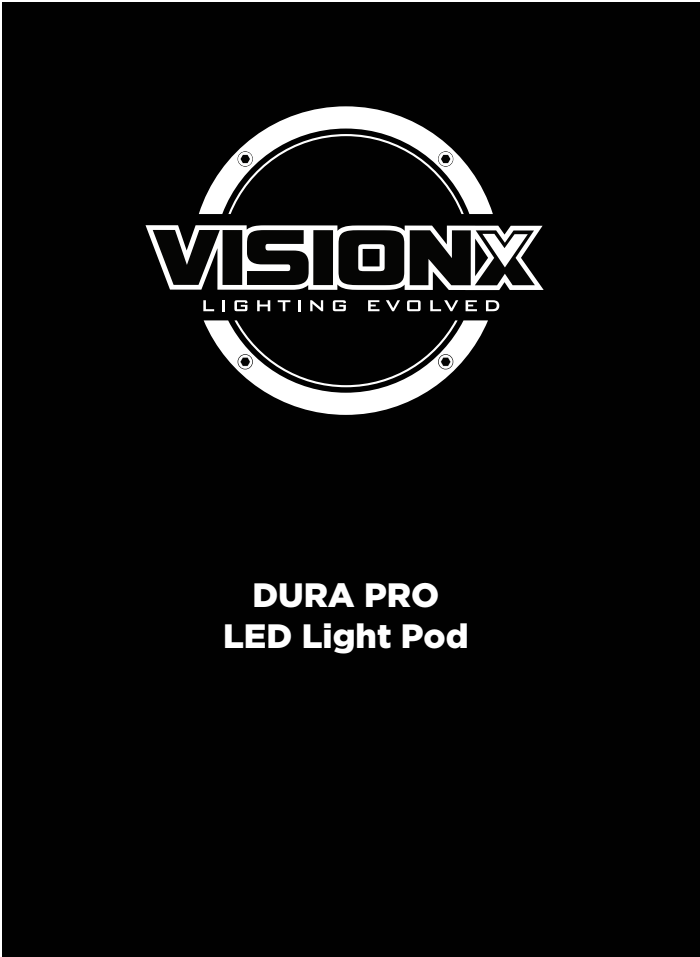


Instruction Manual



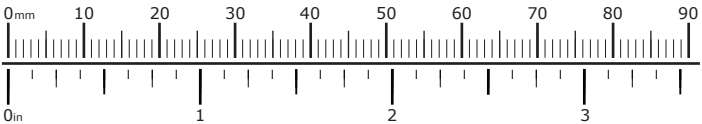
Thank you for choosing VISIONX
We know you would rather be driving your vehicle than wrenching on it, so we go the extra mile to make sure our instructions are clear and as easy to understand as possible. If you have any questions, comments, or suggestions don't hesitate to give our gear experts a call at +1 253 338 8716 or visit WWW.VISIONXOFFROAD.COM

Please Read Before Installing
VISIONX products should always be installed by a qualified technician. If you are unsure of your ability to properly install a product, please have the product installed by your local dealer. VISIONX takes no responsibility for damages caused by improper installation. **Caution:** When installing electronics it is extremely important to pay close attention to how wires are routed.

Installation Tips
We strongly recommend using medium strength liquid thread locker on all screws, nuts, and bolts. It is also important to ensure that all hardware is tightened to the proper torque specifications as listed in your owner's manual. For included accessory hardware please refer to the default torque specifications provided below. Inspect all hardware after the first 30 miles to ensure proper torque specifications are maintained.

Bolt Size	in-lbs	ft-lbs	Nm
M3	10.0 in-lbs	-	1.0 Nm
M4	23.0 in-lbs	-	2.5 Nm
M5	44.5 in-lbs	3.5 ft-lbs	5.0 Nm
M6	78.0 in-lbs	6.5 ft-lbs	9.0 Nm
M8	-	13.5 ft-lbs	18.0 Nm
M10	-	30.0 ft-lbs	41.0 Nm
M12	-	52.0 ft-lbs	71.0 Nm

Hardware Sizing Guide
Not sure what size bolt you have? Use this ruler to measure screws, bolts, spacers, etc. Remember, the length of a screw or bolt is measured from the start of the "mounting surface" to the end of the screw, so only include the screw head when measuring countersunk screws.



VISION X DURA PRO Series Driving Light Pods

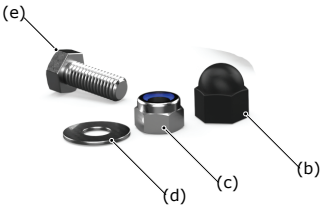


**DURA PRO 2
Driving Light Pod**
White: DURA2-DL2CB

**DURA PRO 4
Driving Light Pod**
White: DURA2-DL4CB

**DURA PRO 6
Driving Light Pod**
White: DURA2-DL6CB

**DURA PRO 9
Driving Light Pod**
White: DURA2-DL9CB



Included With Each Light Pod

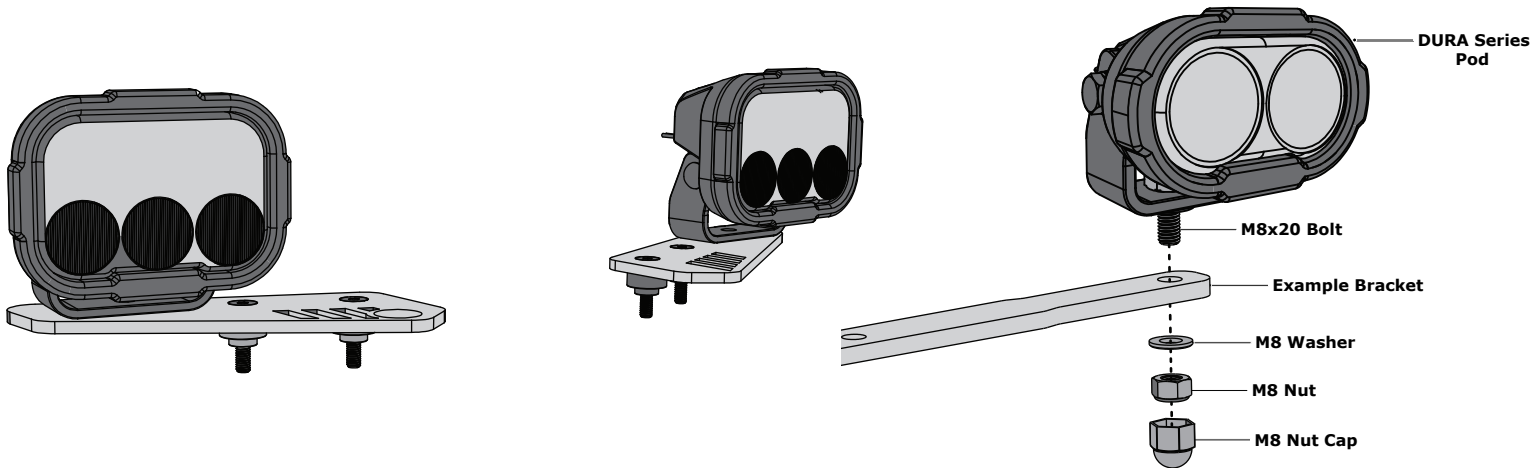
- (a) Wiring Pigtail.....Qty 1
- (b) M8 Nut Cap.....Qty 1
- (c) M8 Nyloc Nut.....Qty 1

- (d) M8 Washer.....Qty 1
- (e) M8 x 20mm Hex Head Bolt.....Qty 1

Tools Required: 13mm Wrench

1. Mounting The Lights

VISIONXOFFROAD.COM



1.1 - Choosing The Mounting Location

Vision X offers dozens of universal and vehicle specific light mounts. To determine the best mounting location consider the following tips. For maximum beam distance at night, mount the lights higher up. For maximum day time visibility, mount the lights down low to increase your overall lighting footprint. To create the optimum lighting and visibility package, mount one pair of long distance spots up high for night time distance and one pair of flood or hybrid lights down low for day time visibility and night time fill.

1.2 - Mounting The Light

Step One: Use a 13mm wrench and the included M8 screw, washer, nut and nut cap to attached the pods to the mounting bracket.

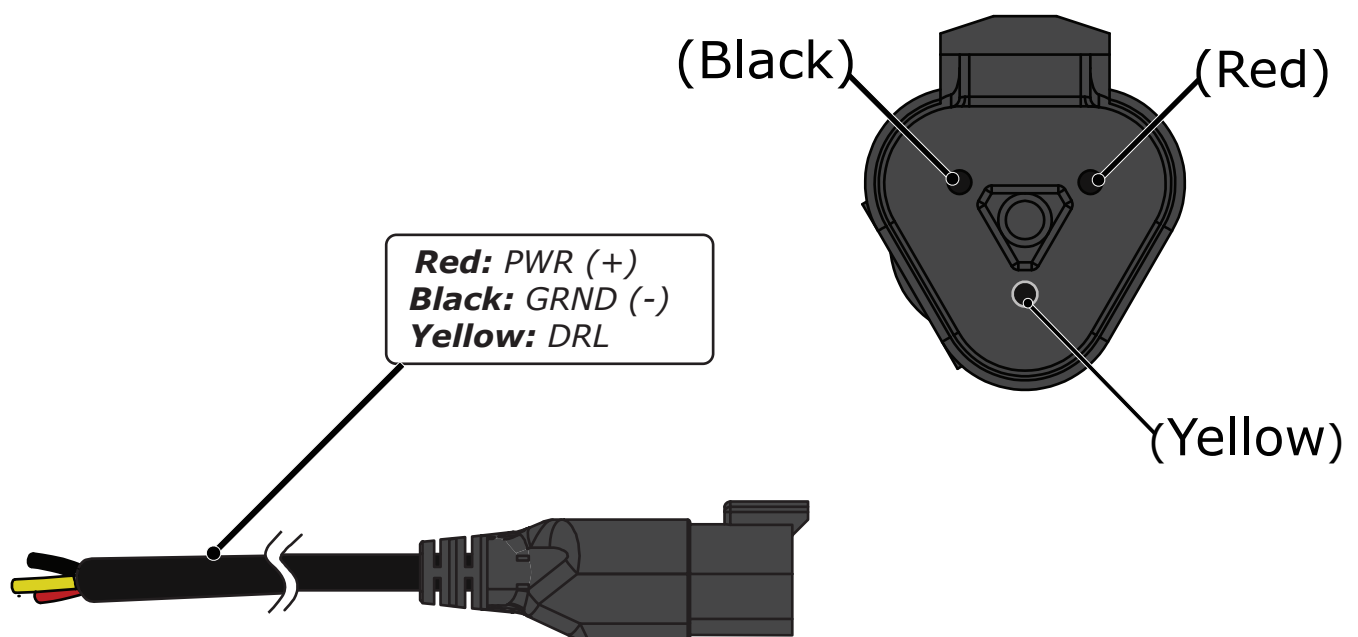
Step Two: Use the M8 plastic nut cap to cover the nut and exposed thread.

1.3 - Aiming

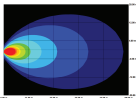
Mount the Light Pod in the chosen location and tighten only to hand tight. Loosen the hinge bolts (M8 Hex head) then aim each light up/down and left/right till the desired light position is achieved.

Once final adjustments are made to the lights, tighten the mounting and hinge bolts to proper torque specs.

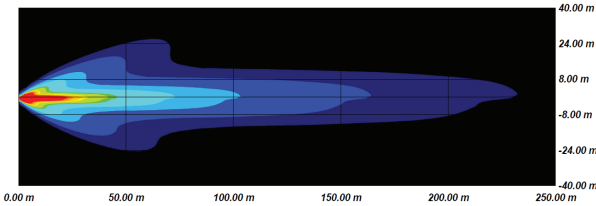
2. Wire Colors & Pinout



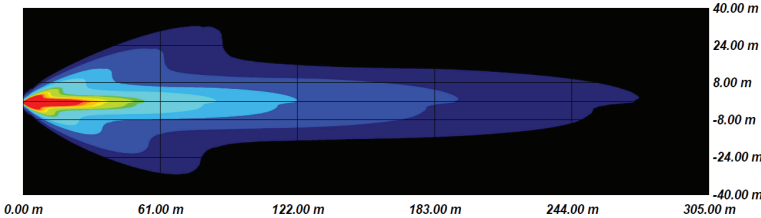
DURA PRO 2
Driving Light Pod
Pod Size: 3" x 2"
Watts: 16 Lumens: 1,700



DURA PRO 4
Driving Light Pod
Pod Size: 3" x 3"
Watts: 32 Lumens: 3,400



DURA PRO 6
Driving Light Pod
Pod Size: 4.5" x 3"
Watts: 48 Lumens: 5,100



DURA PRO 9
Driving Light Pod
Pod Size: 4.5" x 4.5"
Watts: 72 Lumens: 7,650

